

GONZALES, TEXAS

Market Guide

www.gonzalesedc.org

City Contact Information



Jennifer Kolbe
Economic Development Director

820 St. Joseph St.
Gonzales, TX 78629

Phone: (830) 672-2815
Gedc@gonzales.texas.gov

www.gonzalesedc.org

Peer Analysis

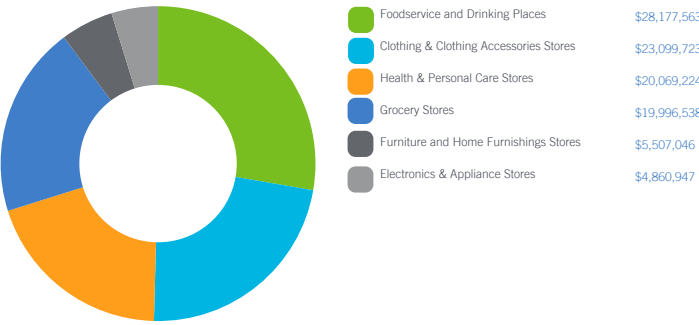
The Peer Analysis, built by Retail Strategies along with our analytics partner (Tetrad), identifies analogue retail nodes within a similar demographic and retail makeup. The Peer Analysis is derived from a 5 or 10 minute drive time from major comparable retail corridors throughout the country. The variables used are population, income, daytime population, market supply and gross leasable area. The following are retail areas that most resemble this core city:

Peer Trade Areas

Marble Falls TX	2700 Us Highway 281
Graham TX	2121 State Highway 16 S
Kenedy TX	200 Business Park Blvd
Cuero TX	1202 E Broadway St
Giddings TX	Us Hwy 290/2374 E Au
La Grange TX	1915 W. State Hwy. 71
Canton TX	603 E Highway 243
Center TX	765 Hurst Street

GAP Analysis \$101,711,041 (Custom Trade Area)

The Gap Analysis is a summary of the primary spending Gaps segmented by retail category. It measures actual consumer expenditures within the City's trade area and compares it to the potential retail revenue generated by retailers in the same area. The difference between the two numbers reflects leakages, or the degree to which consumers travel outside the community for certain retail goods and services. The Gap analysis is a useful tool to gauge retail supply and demand within the community.



Demographics

(Custom Trade Area)



Population
37,076

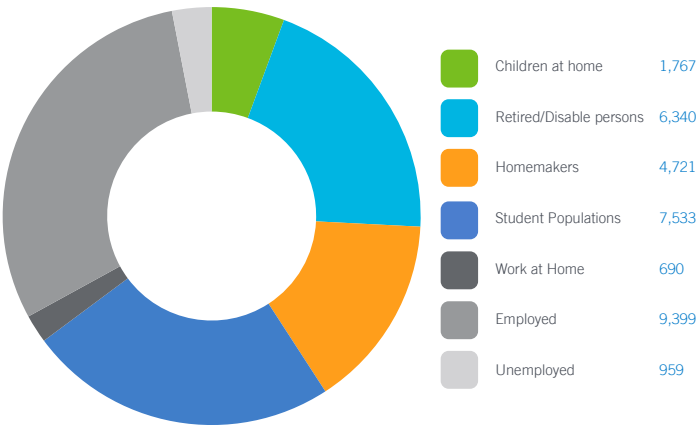


Growth Rate
3.6%



Median Household Income
\$54,946

Daytime Population 31,409 (Custom Trade Area)



Focus Categories

The top categories for focused growth in the municipality are pulled from a combination of leakage reports, peer analysis, retail trends and real estate intuition. Although these are the top categories, our efforts are inclusive beyond the defined list.

Let us know how we can help you find a site!



Grocery Stores



Food and Beverage



Clothing Stores



Health & Personal Care Stores



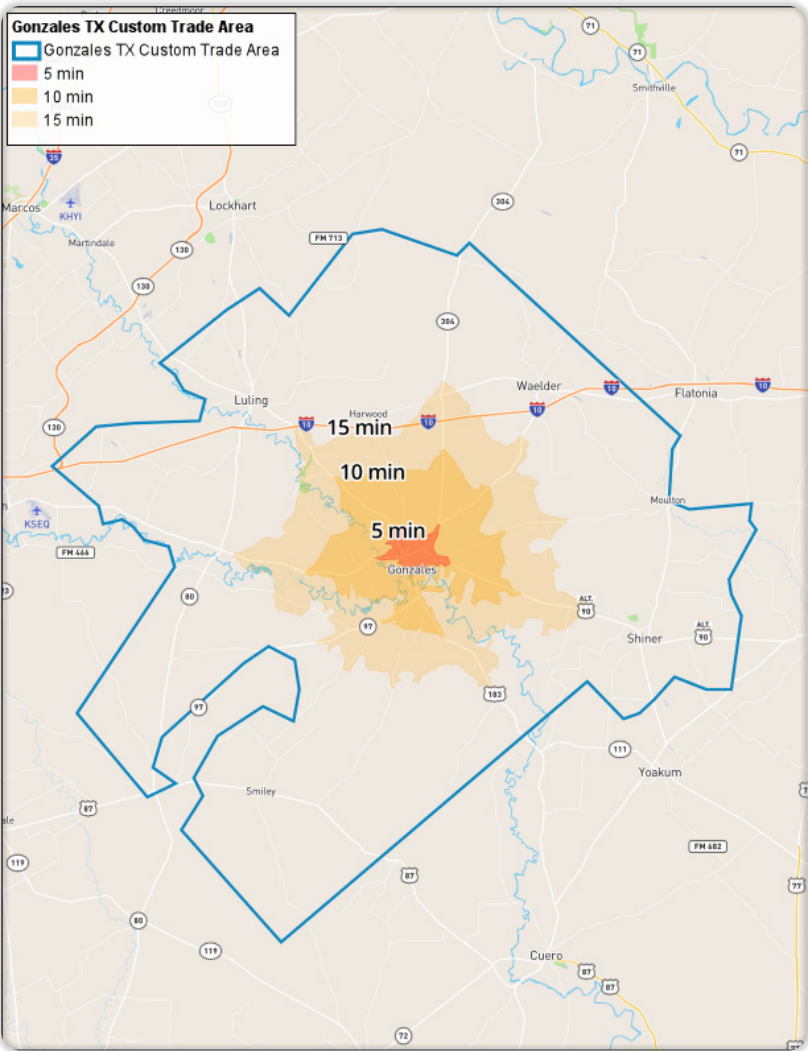
retail academy

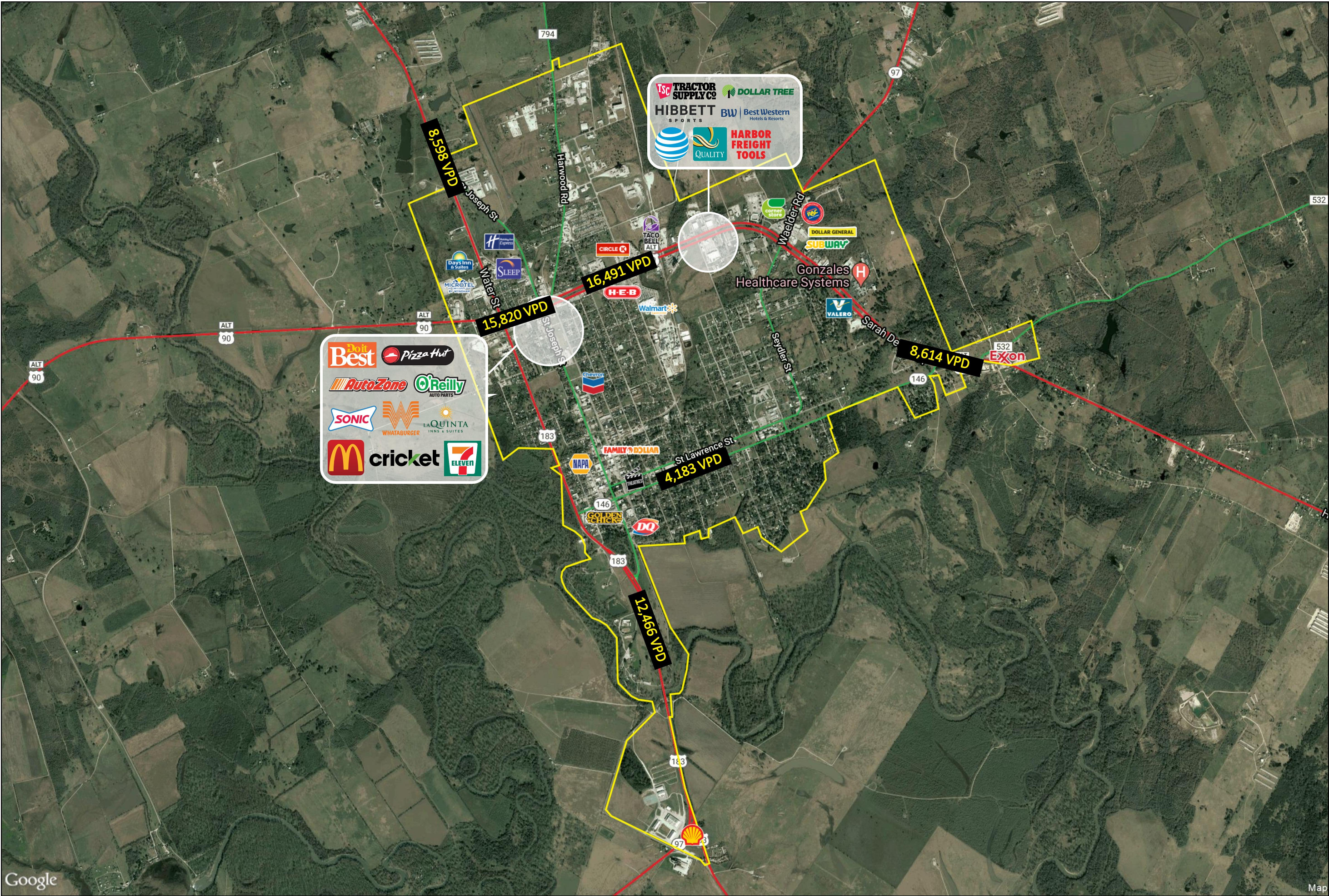
There's a lot of potential here.

DEMOGRAPHIC PROFILE	3 Mile Radius	5 Mile Radius	10 Mile Radius
2020 Estimated Population	7,904	9,245	11,877
Daytime Population	9,247	9,914	11,603
Median HH Income	\$47,004	\$48,566	\$51,939
Number of Households	2,723	3,178	4,167

	5 Minute DT	10 Minute DT	15 Minute DT
2020 Estimated Population	6,774	9,946	12,051
Daytime Population	7,864	10,191	11,939
Median HH Income	\$46,322	\$49,446	\$52,434
Number of Households	2,260	3,432	4,255

*Source: STI PopStats





This map was produced using data from private and government sources deemed to be reliable. The information herein is provided without representation or warranty

©2021, SITES USA Inc., Chandler, AZ (480) 491-1112. All Rights Reserved.

GONZALES, TEXAS

Major Retail & Restaurants



Lat: 29.50451 Long: -97.44331 Zoom: 14

Logos are for identification purposes only and may be trademarks of their respective companies.